

PROCESS MATERIALS, INC.

ROHS CERTIFICATION STATEMENT

August 6, 2009

Part Number: AZO (Aluminum Zinc Oxide) Ceramic Target on Stainless Steel Backing Tube

Process Materials hereby certifies that to the best of its knowledge, the product listed above complies with RoHS directive 2002/95/EC. Articles provided will contain less than or acceptable limits of Lead, Cadmium, Mercury, PBBs, PDBEs, and Hexavalent Chromium.

Methodology

Each component of the overall assembly was evaluated and approved by one of three methods:

SPECIFICATION – Used for components where the specification for the material does not allow for contaminants above acceptable limits.

CERTIFICATION – Components with RoHS certifications provided directly by the supplier or manufacturer of the item.

ANALYSIS – Components with testing performed on individual parts or at the batch level.

A summary of the certification methods used is shown below:

ITEM	DESCRIPTION	COUNT	ITEM APPROVED BY		
			SPECIFICATION	CERTIFICATION	ANALYSIS
A	Stainless Steel Backing Tube	1	X		
B	Indium Bonding Material	1			X
C	AZO Ceramic Material	1			X

PMI conducts annual re-testing of its materials. Copies of the latest test reports are attached to this letter.



Barry Nudelman
President



Test Report

No. 025152:046575

Date: August 5, 2009

Page 1 of 3

Sputtering Components Inc
5625 Brisa St
Ste A
Livermore, CA
United States 94550

Attn: Bill Meredith

The following sample(s) was/were submitted and identified by/on behalf of the client as: AZO Ceramic- Front Side
Color: Green

Sample Received Date: 7/29/2009

Testing Period 8/4/2009

Test Requested: With reference to RoHS Directive 2002/95/EC, and its amendment directives

Test Method: With reference to IEC 62321, 2nd Ed. 111/54/CDV Electro technical Products. Determination of Levels of six Regulated Substances: Screening by XRF Spectroscopy.

Test Results: Please refer to next page.

Conclusion: Based on the performed tests on submitted sample, the results comply with the RoHS Directive 2002/95/EC and its subsequent amendments.

Signed for and on behalf of SGS US Testing Co.

Diane Santino
Manager, Chemistry Laboratory

This document is issued by the Company under its General Conditions of Service accessible at http://www.sgs.com/terms_and_conditions.htm. Attention is drawn to the limitation of liability, indemnification and jurisdiction issues defined therein. Any holder of this document is advised that information contained hereon reflects the Company's findings at the time of its intervention only and within the limits of Client's instructions, if any. The Company's sole responsibility is to its Client and this document does not exonerate parties to a transaction from exercising all their rights and obligations under the transaction documents. Any unauthorized alteration, forgery or falsification of the content or appearance of this document is unlawful and offenders may be prosecuted to the fullest extent of the law.

SGS U.S. Testing Company Inc., Consumer Testing Services 251 Fairfield Ave, Fairfield, NJ 07004, USA t (973) 675-5252 f (973) 575-7175 www.sgs.com

Member of the SGS Group



Test Report

No. 025152:046575

Date: August 5, 2009

Page 2 of 3

Test Results on EDXRF:

Sample Description	Cd	Pb	Hg	Cr	Br
AZO Ceramic- Front Side	BL	BL	BL	BL	BL

Remark:

- (1) Results was obtained by EDXRF for primary screening, and further chemical testing by ICP (for Cd, Pb, Hg), UV-VIS (for CrVI) and GCMSD (for PBBs, PBDEs) are recommended to be performed, if the concentration exceeds the below warning value according to IEC 62321 Ed. 2.

Unit: mg/kg = ppm

Element	Polymer Materials	Metallic Materials	Composite Material
Cd	$BL \leq (70-3\sigma) < X < (130+3\sigma) \leq OL$	$BL \leq (70-3\sigma) < X < (130+3\sigma) \leq OL$	$LOD < X < (150+3\sigma) \leq OL$
Pb	$BL \leq (700-3\sigma) < X < (1300+3\sigma) \leq OL$	$BL \leq (700-3\sigma) < X < (1300+3\sigma) \leq OL$	$BL \leq (500-3\sigma) < X < (1500+3\sigma) \leq OL$
Hg	$BL \leq (700-3\sigma) < X < (1300+3\sigma) \leq OL$	$BL \leq (700-3\sigma) < X < (1300+3\sigma) \leq OL$	$BL \leq (500-3\sigma) < X < (1500+3\sigma) \leq OL$
Br	$BL \leq (300-3\sigma) < X$	---	$BL \leq (250-3\sigma) < X$
Cr	$BL \leq (700-3\sigma) < X$	$BL \leq (700-3\sigma) < X$	$BL \leq (500-3\sigma) < X$

Note: BL = Below Limit by EDXRF analysis.
 OL = Over Limit by EDXRF analysis. Detected value is provided for information only.
 Inconclusive = questionable, need further chemical analysis. Detected value is provided for information only.

- (2) The XRF screening test for RoHS elements – The reading may be different to the actual content in the sample be of non-uniformity composition

This document is issued by the Company under its General Conditions of Service accessible at http://www.sgs.com/terms_and_conditions.htm. Attention is drawn to the limitation of liability, indemnification and jurisdiction issues defined therein. Any holder of this document is advised that information contained hereon reflects the Company's findings at the time of its intervention only and within the limits of Client's instructions, if any. The Company's sole responsibility is to its Client and this document does not exonerate parties to a transaction from exercising all their rights and obligations under the transaction documents. Any unauthorized alteration, forgery or falsification of the content or appearance of this document is unlawful and offenders may be prosecuted to the fullest extent of the law.

SGS U.S. Testing Company Inc., Consumer Testing Services 291 Fairfeld Ave, Fairfield, NJ 07004, USA t (973) 675-5262 f (973) 675-1715 www.sgs.com

Member of the SGS Group



Test Report

No. 025152:046575

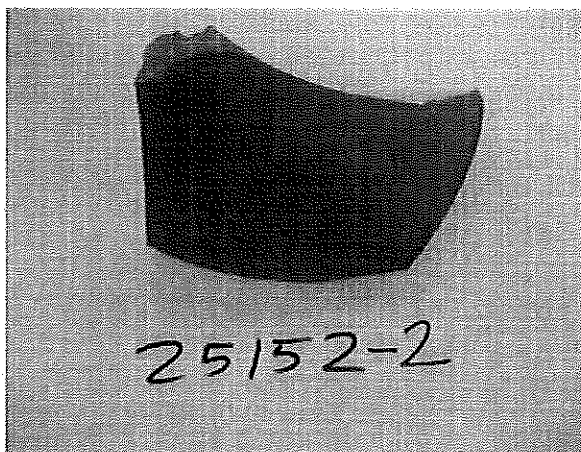
Date: August 5, 2009

Page 3 of 3

- 3) The maximum permissible limit is quoted from the document 2005/618/EC amending RoHS directive 2002/95/EC:

RoHS Restricted Substances	Maximum Concentration Value (mg/kg) (by weight in homogenous materials)
Cadmium (Cd)	100
Lead (Pb)	1000
Mercury (Hg)	1000
Hexavalent Chromium (Cr VI)	1000
Polybrominated biphenyls (PBBs)	1000
Polybrominated diphenylethers (PBDEs)	1000

Sample Photo :



*** End of Report ***

This document is issued by the Company under its General Conditions of Service accessible at http://www.sgs.com/terms_and_conditions.htm. Attention is drawn to the limitation of liability, indemnification and jurisdiction issues defined therein. Any holder of this document is advised that information contained hereon reflects the Company's findings at the time of its intervention only and within the limits of Client's instructions, if any. The Company's sole responsibility is to its Client and this document does not exonerate parties to a transaction from exercising all their rights and obligations under the transaction documents. Any unauthorized alteration, forgery or falsification of the content or appearance of this document is unlawful and offenders may be prosecuted to the fullest extent of the law.

SGS U.S. Testing Company Inc., Consumer Testing Services 291 Fairfield Ave, Fairfield, NJ 07004, USA | (973) 675-5252 | (973) 675-7175 www.sgs.com

Member of the SGS Group



Test Report

No. 025152:046577

Date: August 5, 2009

Page 1 of 3

Sputtering Components Inc
5625 Brisa St
Ste A
Livermore, CA
United States 94550

Attn: Bill Meredith

The following sample(s) was/were submitted
and identified by/on behalf of the client as: AZO Ceramic- Back Side (Bond Side)
Color: Silver

Sample Received Date: 7/29/2009

Testing Period 8/4/2009

Test Requested: With reference to RoHS Directive 2002/95/EC, and its amendment directives

Test Method: With reference to IEC 62321, 2nd Ed. 111/54/CDV Electro technical Products.
Determination of Levels of six Regulated Substances: Screening by XRF
Spectroscopy.

Test Results: Please refer to next page.

Conclusion: Based on the performed tests on submitted sample, the results comply
with the RoHS Directive 2002/95/EC and its subsequent amendments.

Signed for and on behalf of SGS US Testing Co.

Diane Santino
Manager, Chemistry Laboratory

This document is issued by the Company under its General Conditions of Service accessible at http://www.sgs.com/terms_and_conditions.htm. Attention is drawn to the limitation of liability, indemnification and jurisdiction issues defined therein. Any holder of this document is advised that information contained hereon reflects the Company's findings at the time of its intervention only and within the limits of Client's instructions, if any. The Company's sole responsibility is to its Client and this document does not exonerate parties to a transaction from exercising all their rights and obligations under the transaction documents. Any unauthorized alteration, forgery or falsification of the content or appearance of this document is unlawful and offenders may be prosecuted to the fullest extent of the law.

SGS U.S. Testing Company Inc., Consumer Testing Services 291 Fairfield Ave, Fairfield, NJ 07004, USA t (973) 675-5352 f (973) 575-7175 www.sgs.com

Member of the SGS Group



Test Report

No. 025152:046577

Date: August 5, 2009

Page 2 of 3

Test Results on EDXRF:

Sample Description	Cd	Pb	Hg	Cr	Br
AZO Ceramic- Back Side (Bond Side)	BL	BL	BL	BL	BL

Remark:

- (1) Results was obtained by EDXRF for primary screening, and further chemical testing by ICP (for Cd, Pb, Hg), UV-VIS (for CrVI) and GCMSD (for PBBs, PBDEs) are recommended to be performed, if the concentration exceeds the below warning value according to IEC 62321 Ed. 2.

Unit: mg/kg = ppm

Element	Polymer Materials	Metallic Materials	Composite Material
Cd	$BL \leq (70-3\sigma) < X < (130+3\sigma) \leq OL$	$BL \leq (70-3\sigma) < X < (130+3\sigma) \leq OL$	$LOD < X < (150+3\sigma) \leq OL$
Pb	$BL \leq (700-3\sigma) < X < (1300+3\sigma) \leq OL$	$BL \leq (700-3\sigma) < X < (1300+3\sigma) \leq OL$	$BL \leq (500-3\sigma) < X < (1500+3\sigma) \leq OL$
Hg	$BL \leq (700-3\sigma) < X < (1300+3\sigma) \leq OL$	$BL \leq (700-3\sigma) < X < (1300+3\sigma) \leq OL$	$BL \leq (500-3\sigma) < X < (1500+3\sigma) \leq OL$
Br	$BL \leq (300-3\sigma) < X$	---	$BL \leq (250-3\sigma) < X$
Cr	$BL \leq (700-3\sigma) < X$	$BL \leq (700-3\sigma) < X$	$BL \leq (500-3\sigma) < X$

Note: BL = Below Limit by EDXRF analysis.
 OL = Over Limit by EDXRF analysis. Detected value is provided for information only.
 Inconclusive = questionable, need further chemical analysis. Detected value is provided for information only.

- (2) The XRF screening test for RoHS elements – The reading may be different to the actual content in the sample be of non-uniformity composition

This document is issued by the Company under its General Conditions of Service accessible at http://www.sgs.com/terms_and_conditions.htm. Attention is drawn to the limitation of liability, indemnification and jurisdiction issues defined therein. Any holder of this document is advised that information contained hereon reflects the Company's findings at the time of its intervention only and within the limits of Client's instructions, if any. The Company's sole responsibility is to its Client and this document does not exonerate parties to a transaction from exercising all their rights and obligations under the transaction documents. Any unauthorized alteration, forgery or falsification of the content or appearance of this document is unlawful and offenders may be prosecuted to the fullest extent of the law.

SGS U.S. Testing Company Inc., Consumer Testing Services 291 Fairfield Ave, Fairfield, NJ 07504, USA t (973) 575-5252 f (973) 575-1775 www.sgs.com

Member of the SGS Group



Test Report

No. 025152:046577

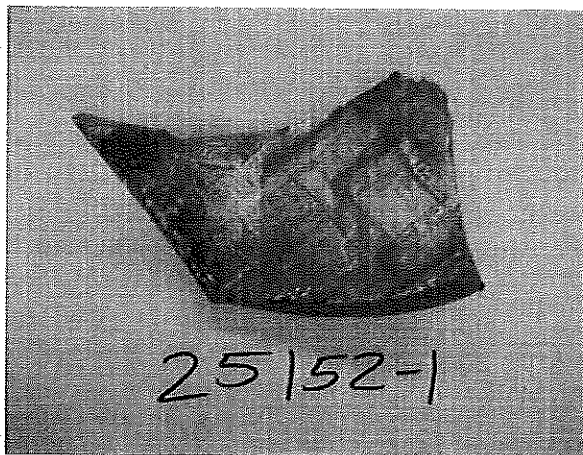
Date: August 5, 2009

Page 3 of 3

- 3) The maximum permissible limit is quoted from the document 2005/618/EC amending RoHS directive 2002/95/EC:

RoHS Restricted Substances	Maximum Concentration Value (mg/kg) (by weight in homogenous materials)
Cadmium (Cd)	100
Lead (Pb)	1000
Mercury (Hg)	1000
Hexavalent Chromium (Cr VI)	1000
Polybrominated biphenyls (PBBs)	1000
Polybrominated diphenylethers (PBDEs)	1000

Sample Photo :



*** End of Report ***

This document is issued by the Company under its General Conditions of Service accessible at http://www.sgs.com/terms_and_conditions.htm. Attention is drawn to the limitation of liability, indemnification and jurisdiction issues defined therein. Any holder of this document is advised that information contained hereon reflects the Company's findings at the time of its intervention only and within the limits of Client's instructions, if any. The Company's sole responsibility is to its Client and this document does not exonerate parties to a transaction from exercising all their rights and obligations under the transaction documents. Any unauthorized alteration, forgery or falsification of the content or appearance of this document is unlawful and offenders may be prosecuted to the fullest extent of the law.

SGS U.S. Testing Company Inc., Consumer Testing Services 291 Fairfield Ave, Fairfield, NJ 07004, USA | (973) 575-5352 | (973) 575-1775 www.sgs.com

Member of the SGS Group